



office of the governor of the commonwealth of virginia

# GOVERNOR'S COVID-19 LONG-TERM CARE TASK FORCE

Dr. Laurie Forlano, Deputy Director, Office of Epidemiology, VDH  
Sarah Lineberger, HAI Program Manager, Office of Epidemiology, VDH  
Brenden Rivenbark, Senior Policy Analyst, Office of the Commissioner, VDH

November 18, 2021

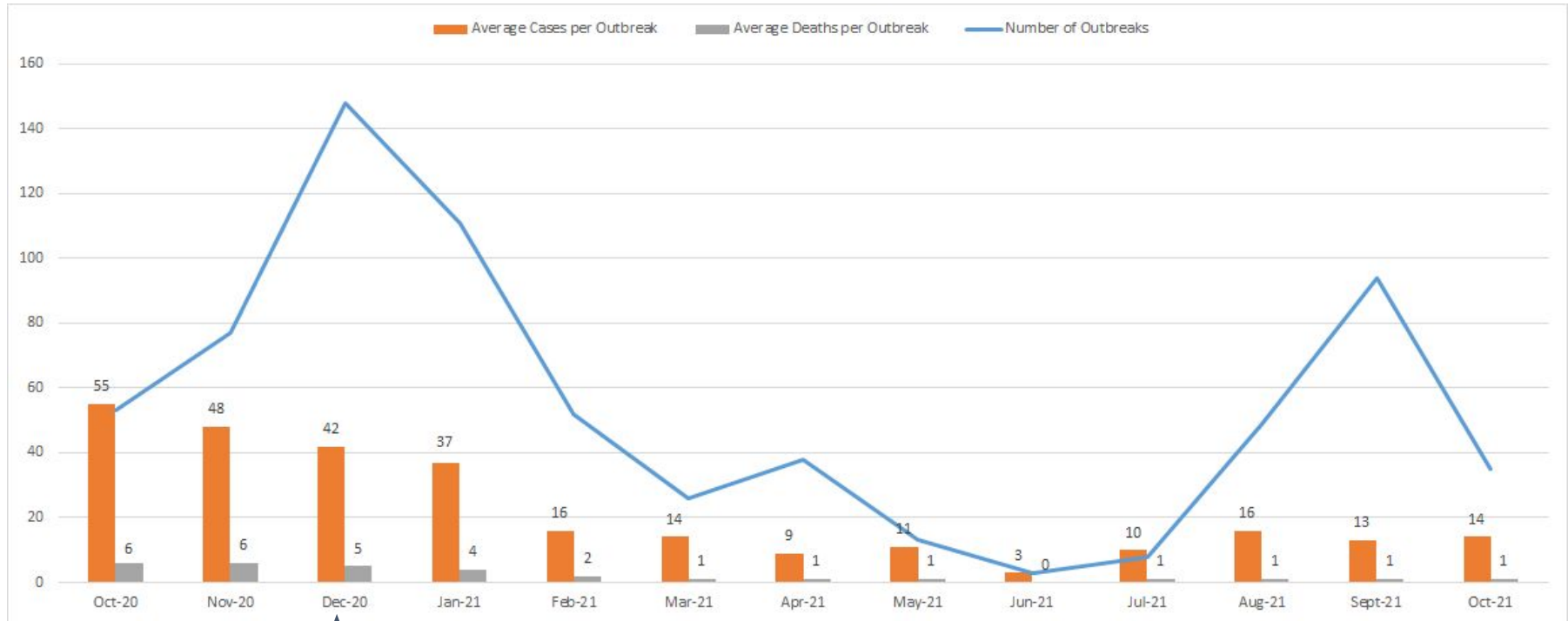
# Welcome and Housekeeping Items

- Please mute your phone (do NOT put us on hold) if you are not speaking
- We prefer to take questions/comments at the end of each agenda item
  - Feel free to utilize the chat box

# Overview of Agenda

- Data Update
- Infection Control Guidance Updates
- Emergency Regulation Requiring COVID-19 Vaccination for Health Care Workers
- Revised CMS Nursing Home Visitation Guidelines
- Monoclonal Antibody Update
- Strike Team Planning
- Next Steps
- Discussion

# COVID-19 Outbreaks in Long-Term Care Facilities<sup>\*^†</sup>



↑ LTCF Federal Pharmacy Partnership Program Begins (12/28/20)

(Updated 11/10/2021)

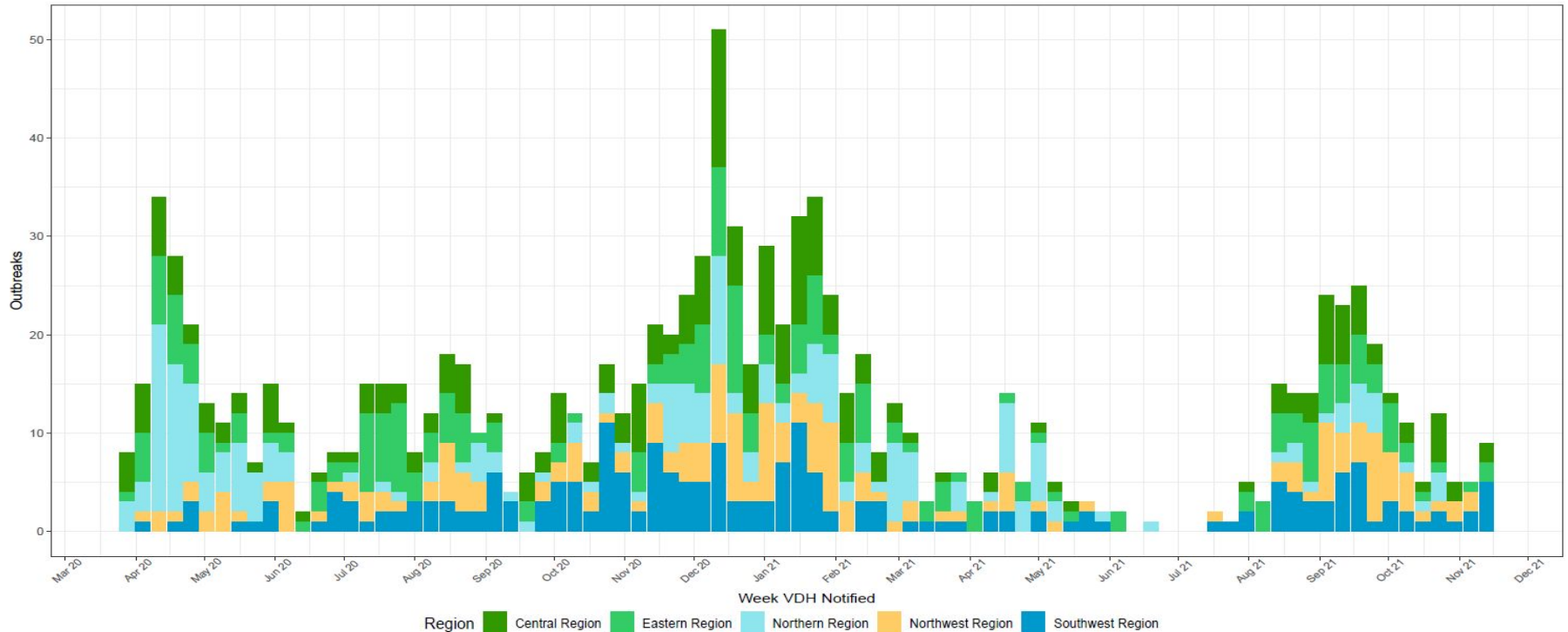
\*Long-term care facility includes assisted living facilities, multicare facilities, and nursing homes.

^Data from VOSS and VEDSS are subject to change.

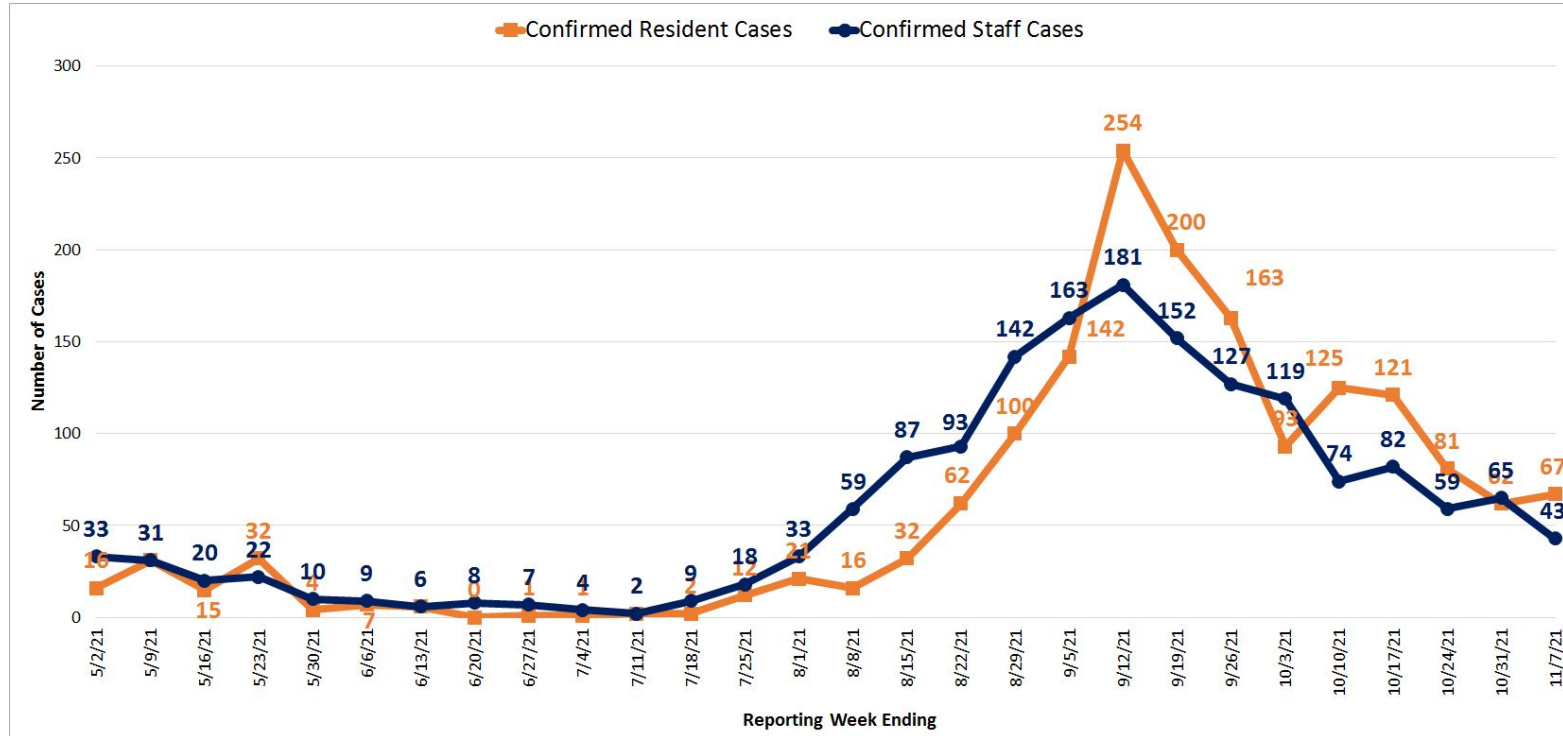
†Months here are from the date that VDH was notified. Outbreaks may have occurred in previous months and were retroactively reported to VDH.

# Trend: Number and Region of LTCF COVID-19 Outbreaks

by date VDH notified; includes outbreaks reported from assisted living facilities, nursing homes, and multicare facilities to VDH with a confirmed or suspected etiologic agent of SARS-CoV-2

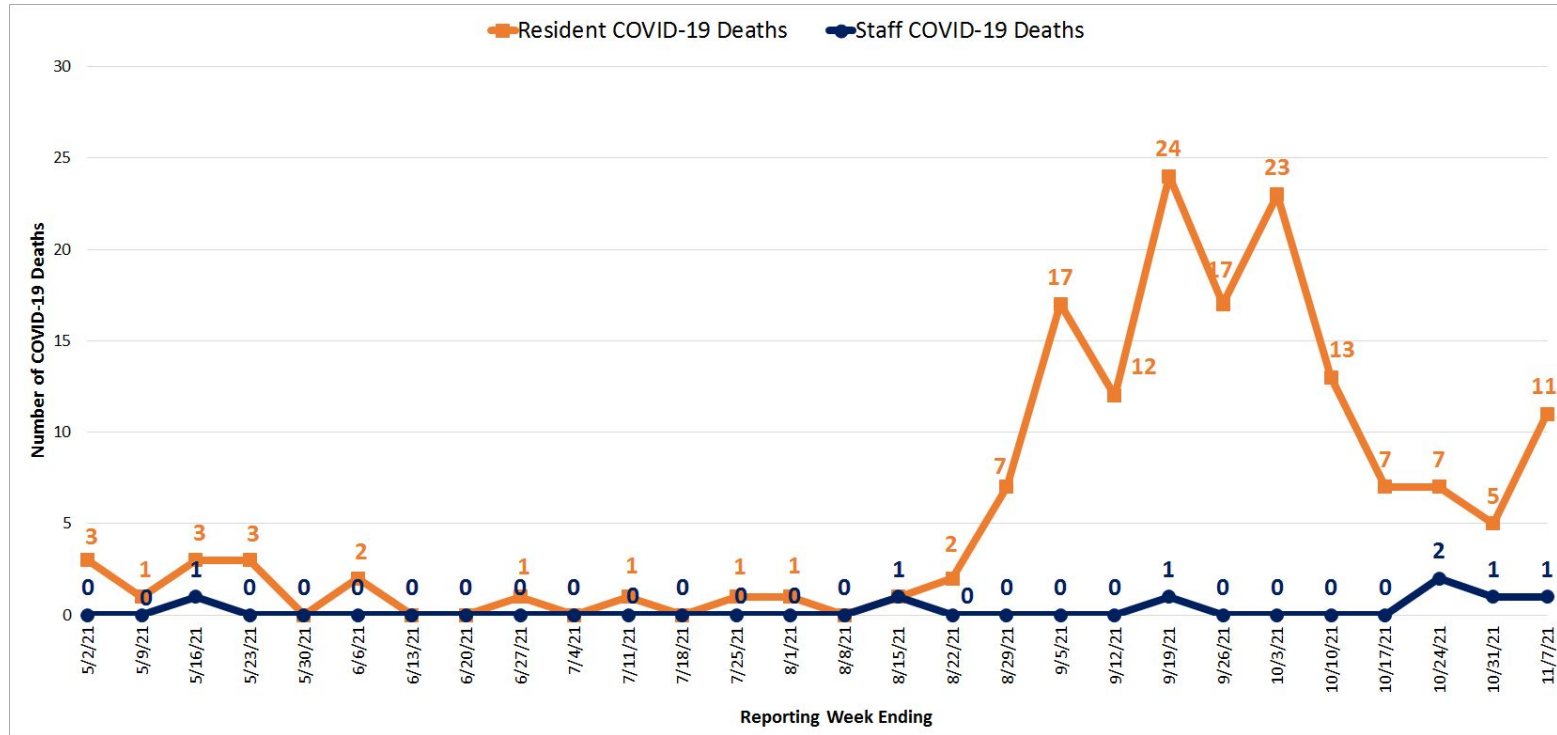


# Nursing Home Resident and Staff COVID-19 Cases



Data are from NHSN as of 11/15/21 and are subject to change. Data include PCR and antigen test results.

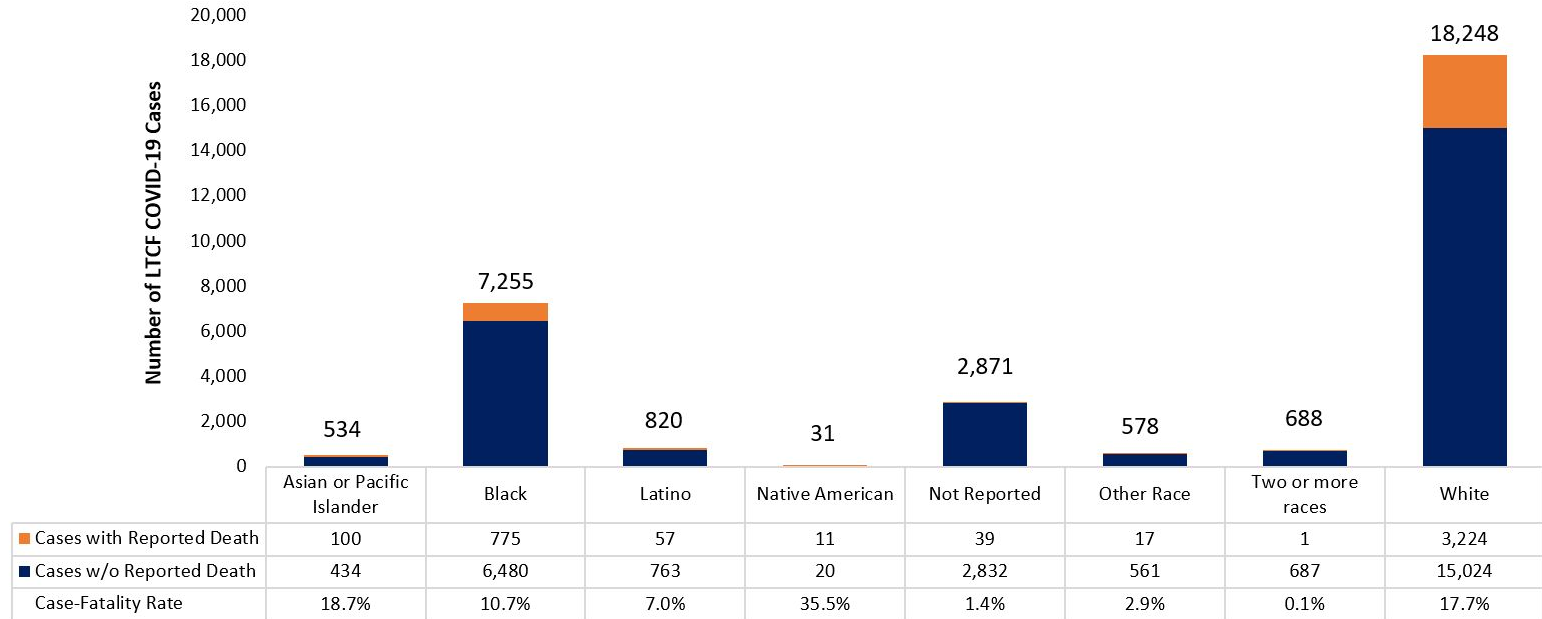
# Nursing Home Resident and Staff COVID-19 Deaths



Data are from NHSN as of 11/15/21 and are subject to change. Data include PCR and antigen test results.

# COVID-19 Cases and Deaths in LTCFs\* by Race/Ethnicity<sup>^</sup>

N=31,025



\*Long-term care facility includes nursing homes, assisted living facilities, multicare facilities, group homes, and behavioral health residential facilities. Includes residents and staff.

<sup>^</sup>Data from VOSS and VEDSS are subject to change



# Health Equity Dashboard

## Rate Ratios This Month

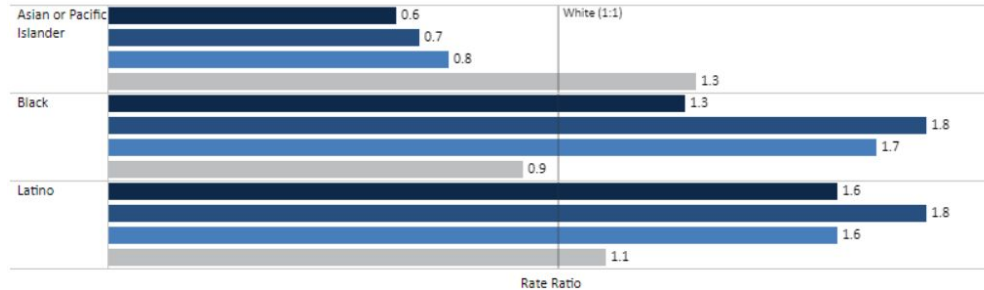
This chart shows rate ratios for all the data through this current month (also known as cumulative through this month). Death data are not included for individual local health districts due to small numbers.

### Select Health District

(Affects all charts on page)

All

- Cases
- Hospitalizations
- Deaths
- Vaccinations



## Rate Ratios Past 6 Months

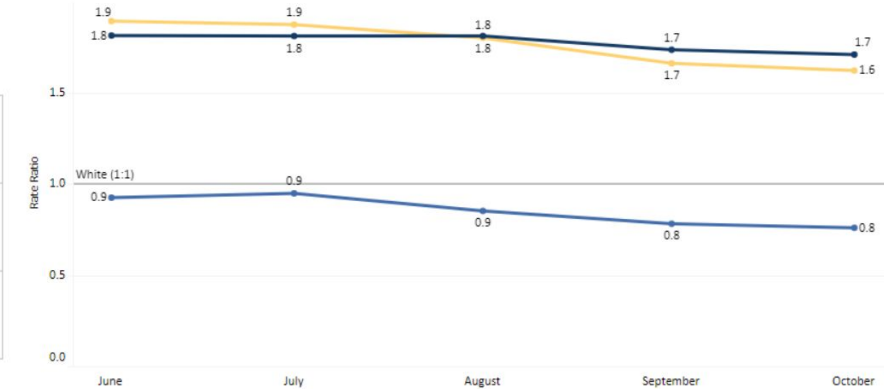
This chart shows rate ratios for all the data through each month over the past six months (also known as cumulative over time).

### Select Category

(Affects line chart only)

Deaths

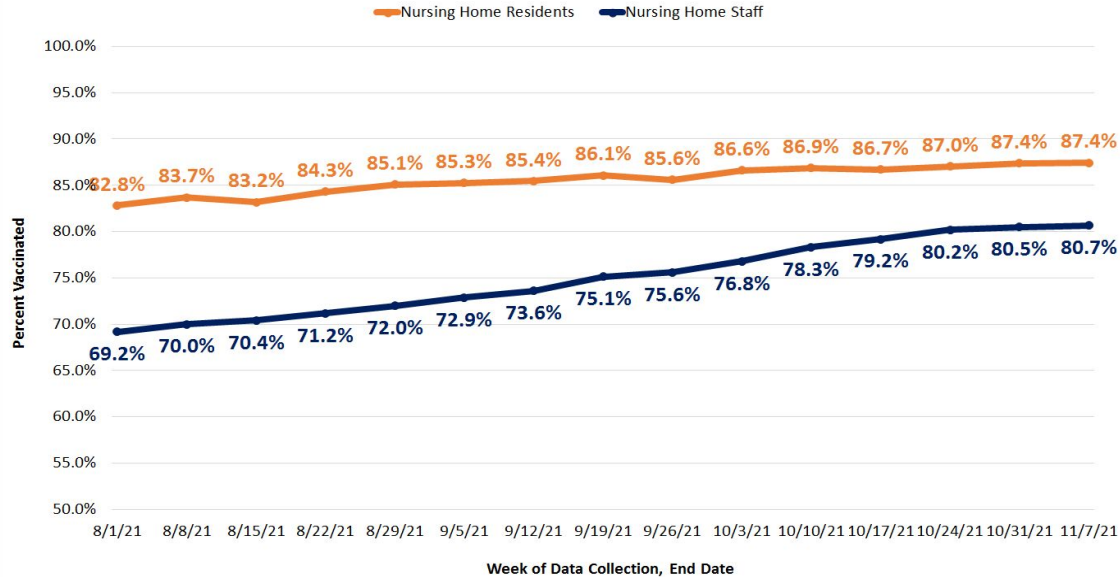
- Asian or Pacific Islander
- Black
- Latino



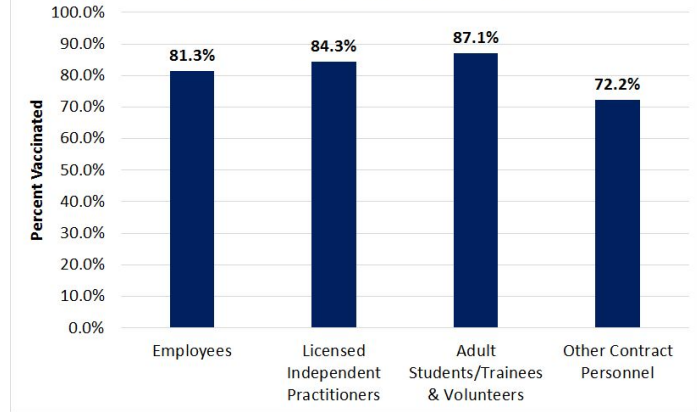
Rate ratios are used to quantify disparity. Disparity refers to differences in health status among distinct segments of the population including differences that occur by gender, race or ethnicity, education or income, disability, or living in various geographic localities. This dashboard looks specifically at race and ethnicity. A rate ratio compares the rate of events in different groups to a reference group and expresses it as a simple ratio. In general, higher rate ratios mean higher rates within one group compared to the reference group.

# COVID-19 Vaccination in Nursing Homes

Virginia Nursing Home Vaccination Rates for Residents and Staff by Reporting Week



Vaccination by Nursing Home Staff Type

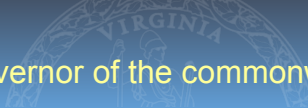


Data are from NHSN as of 11/15/2021.

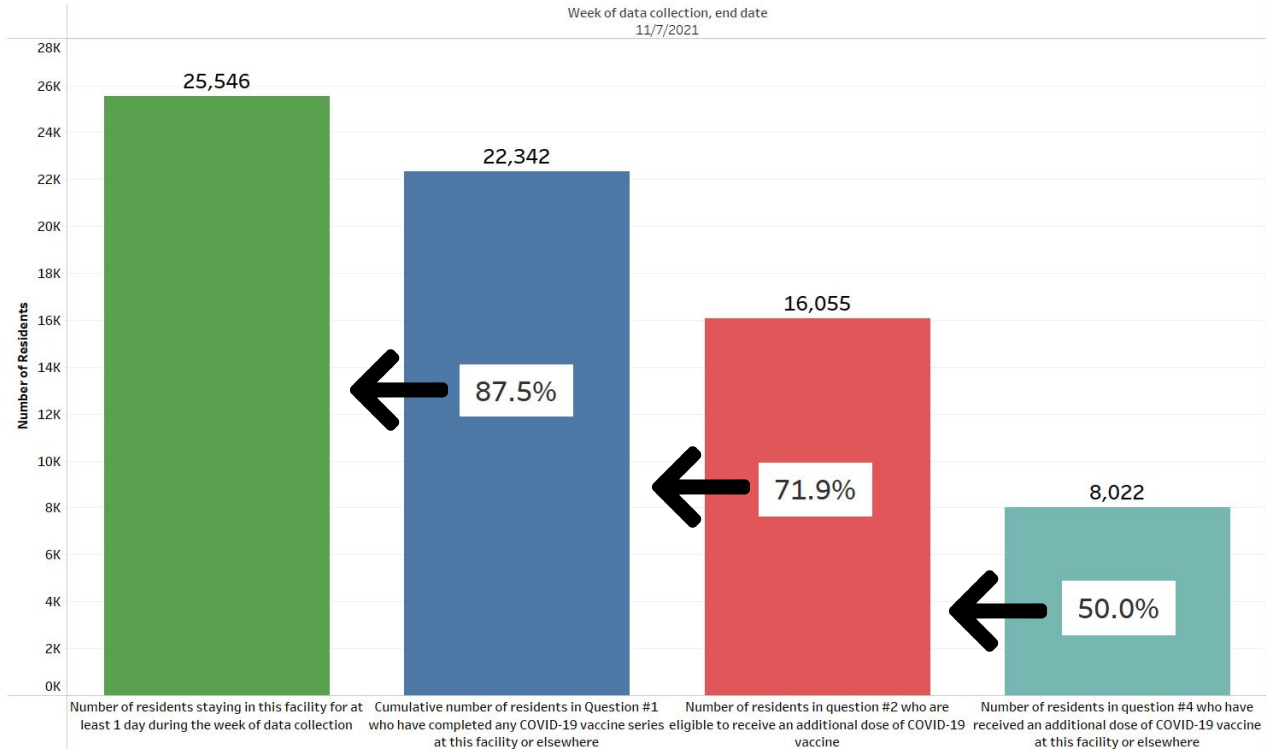
In Virginia, 275 nursing homes reported resident vaccination data for the reporting week ending 11/7/2021;

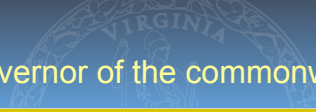
275 nursing homes reported staff vaccination data for the reporting week ending 11/7/2021.

For staff type definitions, please refer to the [NHSN Table of Instructions](#).

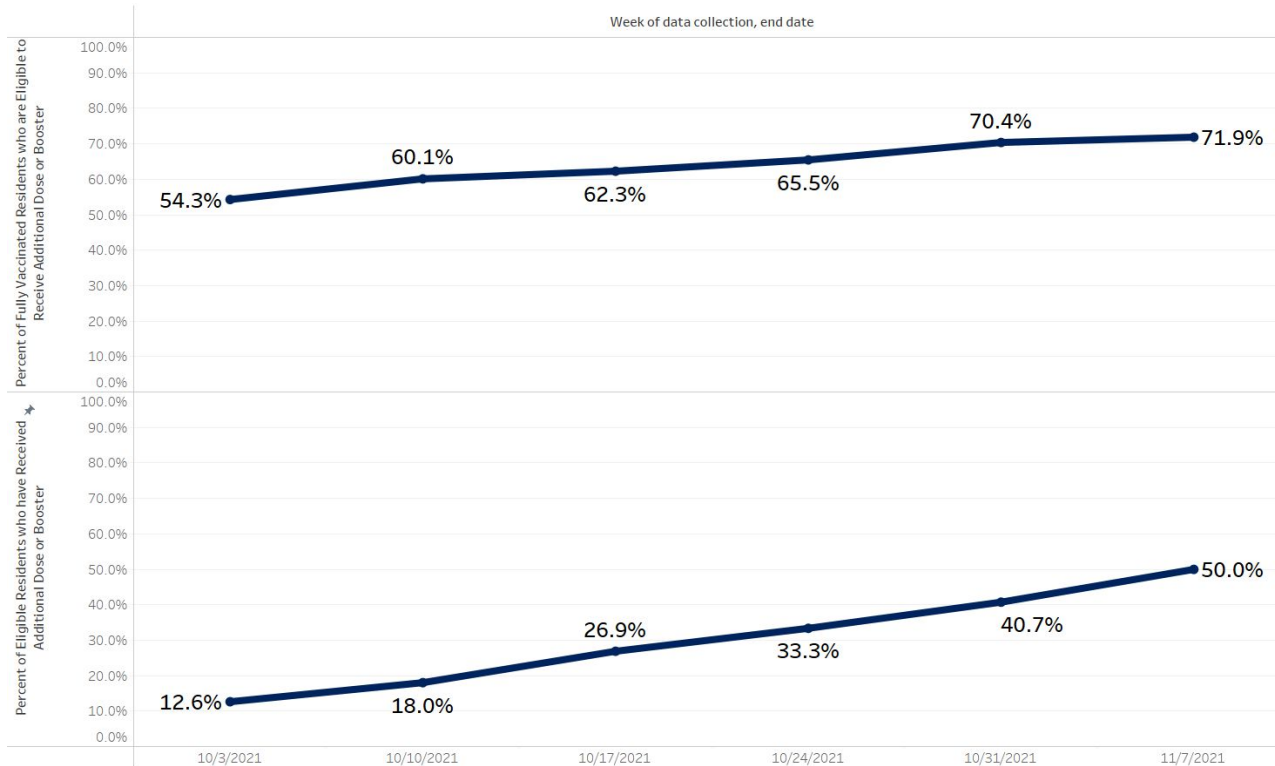


# Resident COVID-19 Vaccination - Additional or Booster Doses

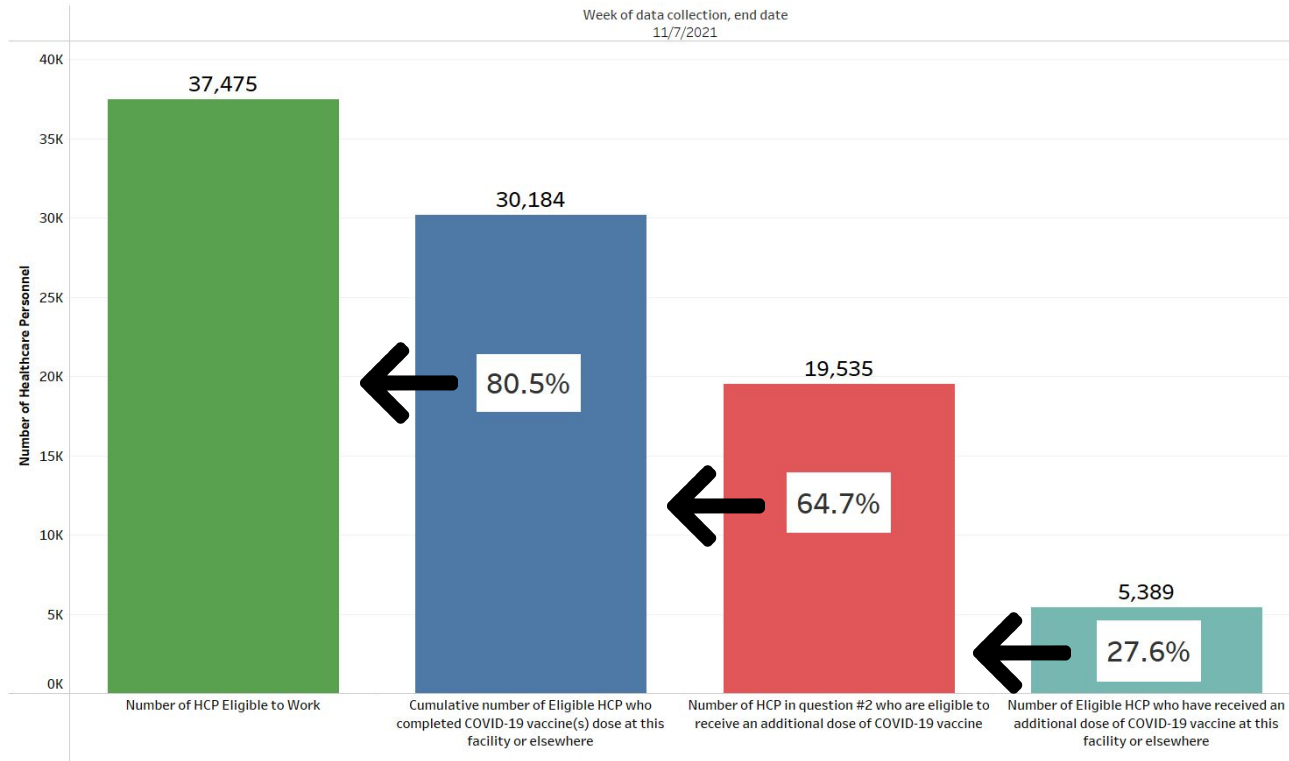




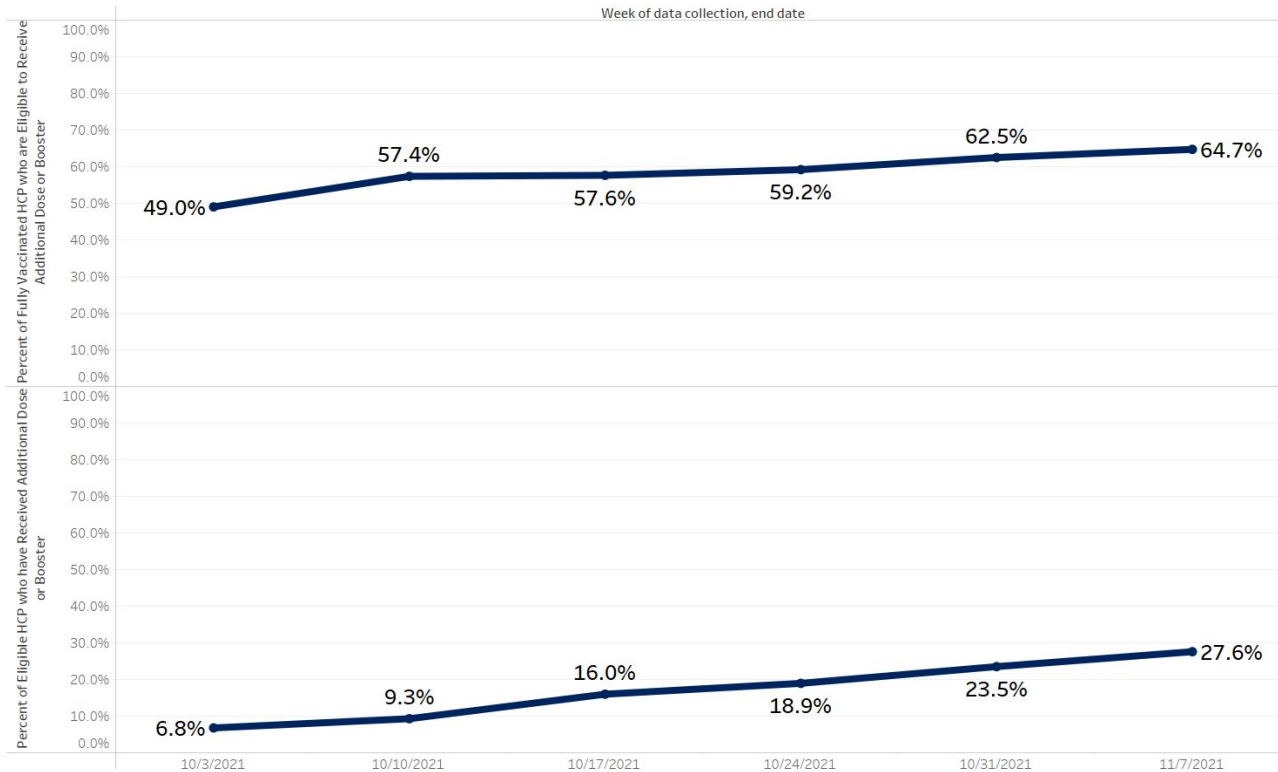
# Resident COVID-19 Vaccination - Additional or Booster Doses



# Staff COVID-19 Vaccination - Additional or Booster Doses

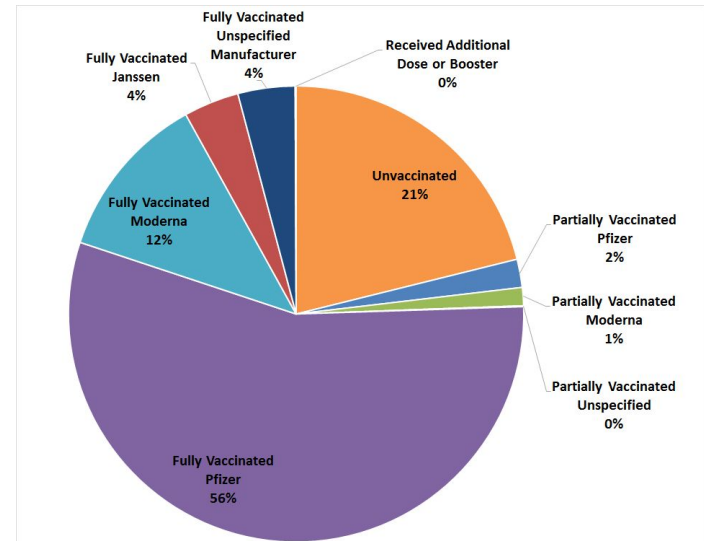


# Staff COVID-19 Vaccination - Additional or Booster Doses

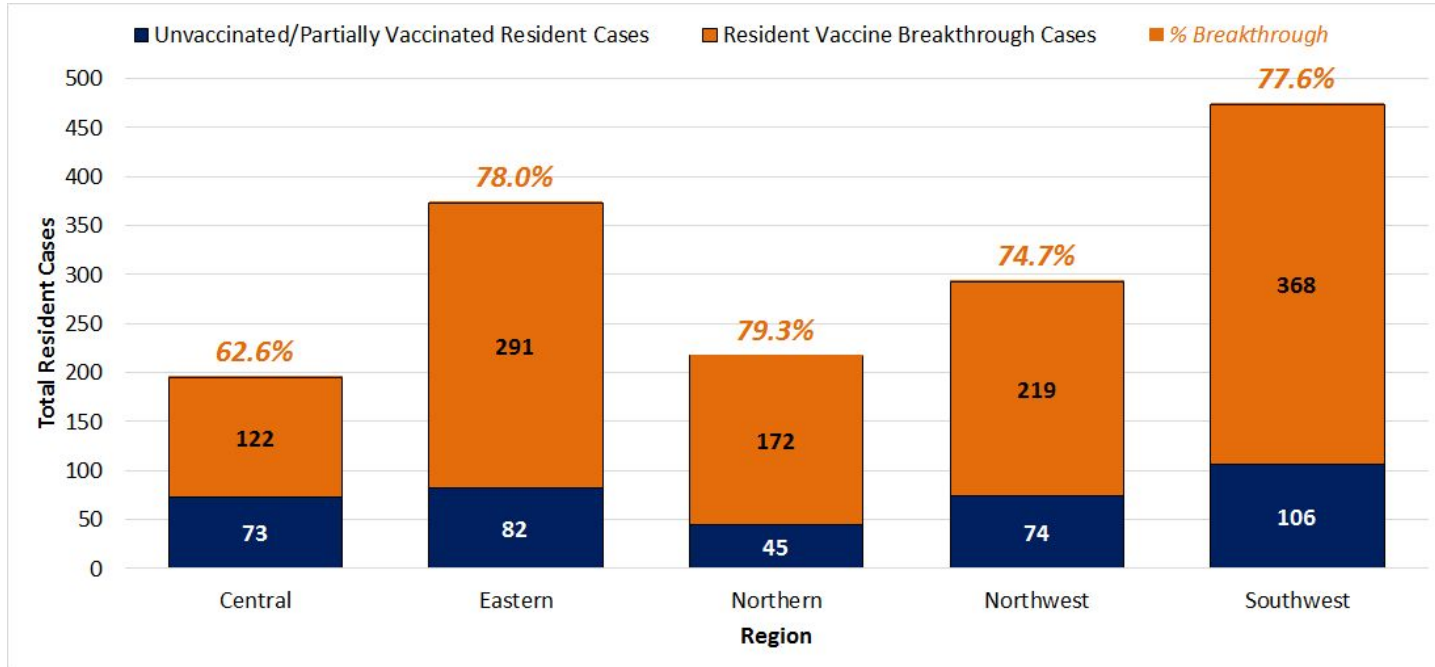


## Vaccine Breakthrough Cases in Virginia Nursing Homes, July 19, 2021 - November 7, 2021

- From July 19, 2021 - November 7, 2021, 159 Virginia nursing homes (56% of all nursing homes in Virginia) reported at least 1 confirmed resident case of COVID-19
  - Among these outbreaks, there were an average of 10 cases and a maximum of 69 cases
  - There were a total of 1,552 cases across all 159 nursing homes during this time period
- Among all cases reported during this time period, **76% of resident cases had been fully vaccinated** (n=1,172 vaccine breakthrough cases)
  - 24% of cases were unvaccinated or partially vaccinated (n=328 unvaccinated, n=52 partially vaccinated)
  - 16 facilities (10%) reported no vaccine breakthrough cases and 143 (90%) reported at least one vaccine breakthrough case
- Most vaccine breakthrough cases occurred among residents who had been fully vaccinated with the Pfizer-BioNTech vaccine (74%)



# Vaccine Breakthrough Cases in Virginia Nursing Homes, July 19, 2021 - November 7, 2021



Data are from NHSN as of 11/15/2021. [Resident vaccine breakthrough cases](#) are reported when a resident had completed an FDA-authorized COVID-19 vaccine series at least two weeks prior to testing positive for COVID-19.



## Guidance for Safe Holidays

- CDC Guidance for Holiday Celebration-  
<https://www.cdc.gov/coronavirus/2019-ncov/daily-life-coping/holidays/celebrations.html>
- CMS revised their visitation guidance for NHs-  
<https://www.cms.gov/files/document/qso-20-39-nh-revised.pdf>
- VDH Guidance for Social Gathering and Events-  
<https://www.vdh.virginia.gov/coronavirus/get-the-latest-guidance/social-gatherings/>
- Toolkit: Thanksgiving 2021 Safety Tips-  
<https://publichealthcollaborative.org/resources/toolkit-thanksgiving-2021-safety-tips/>
- Infection Prevention & Control Guidance FAQ for Nursing Homes-  
<https://www.vdh.virginia.gov/coronavirus/get-the-latest-guidance/health-professionals/virginia-long-term-care-task-force/infection-prevention-control-guidance-faq-for-nursing-homes/>
  - What are VDH recommendations for outdoor visitations?
  - What are best practices for resident outings and for residents who want to do home visits?

# Emergency Regulation Requiring COVID-19 Vaccination for Health Care Workers

- [Medicare and Medicaid Programs: Omnibus COVID-19 Health Care Staff Vaccination](#)
- Here is the information CMS presented on a provider webinar:
- Eligibility – Who is included? Requirements apply to facilities regulated under the Medicare Conditions of Participation (CoPs) This Includes:
- Ambulatory Surgery Centers • Clinics, Rehabilitation Agencies, and Public Health Agencies as Providers of Outpatient Physical Therapy and Speech-Language Pathology Services • Community Mental Health Centers • Comprehensive Outpatient Rehabilitation Facilities • Critical Access Hospitals • End-Stage Renal Disease Facilities • Home Health Agencies • Home Infusion Therapy Suppliers • Hospices • Hospitals • Intermediate Care Facilities for Individuals with Intellectual Disabilities • Long Term Care Facilities • Programs for All-Inclusive Care for the Elderly Organizations (PACE) • Psychiatric Residential Treatment Facilities • Rural Health Clinics/Federally Qualified Health Centers.

## Emergency Regulation Requiring COVID-19 Vaccination for Health Care Workers (cont.)

- So What? – If you are one of the above providers or suppliers, this regulation applies to you and you must abide by the requirements.
- Eligibility – Who is excluded? The following provider and supplier types are not included in this requirement:
- Religious Nonmedical Health Care Institutions (RNHCIs) • Organ Procurement Organizations • Portably X-Ray Suppliers. Additionally, the requirements do not apply to the following: • Assisted Living Facilities • Group Homes • Home and Community-based Services • Physician’s Offices.
- Key Fact to Remember: This regulation and the requirements within only apply to providers and suppliers regulated under the CMS Conditions of Participation (CoPs).

## Revised CMS Nursing Home Visitation Guidelines

On November 12, 2021, CMS released [revised visitation guidelines](#) for certified nursing homes.

# Monoclonal Antibody Update

# VDH LTCF STRIKE Team and Infrastructure Project Proposal Overview

- Use proposal document and budget template (*emailed by Brenden on 11/18*) to communicate identified needs and define projects to meet those needs
- Proposal should follow priorities outlined in [CDC grant guidance](#)
- Proposals due to [HAI@vdh.virginia.gov](mailto:HAI@vdh.virginia.gov) **no later than 5pm on Dec 6**
- Proposal includes project purpose and summary, expected outcomes, results measurement, personnel & external involvement, timeline, high-level budget
- Proposals will be used by the VDH HAI/AR program to develop the grant work plan and budget; formal RFP process to follow
- No limit to how many proposals may be submitted by one entity; proposals may be cooperative

# Discussion

# Next Steps

- LTC Task Force Newsletter
- Monthly LTC Task Force meeting December 16



## Selected COVID-19 Dashboards

- [COVID-19 in Virginia Summary](#)
- [COVID-19 Vaccine Summary](#)
- [COVID-19 Cases by Vaccination Status](#)
- [COVID-19 Level of Community Transmission](#)
- [COVID-19 Outbreaks in Virginia](#)
- [COVID-19 Outbreaks by Setting](#)
- [COVID-19 Variants of Concern](#)
- [VDH PCR Test Positivity Rates](#)
- [VHHA COVID-19 Hospitalizations](#)
- [Equity in Action](#)
- [Equity at a Glance](#)